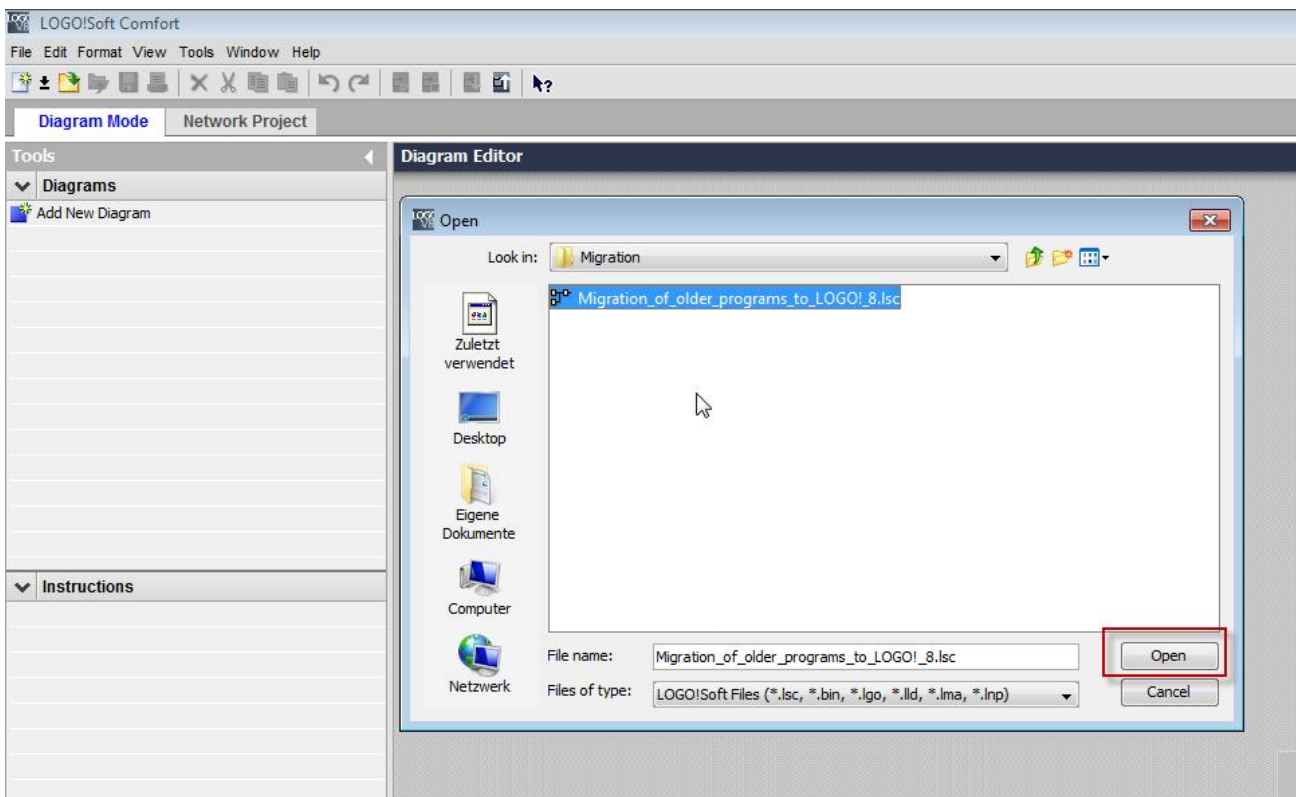
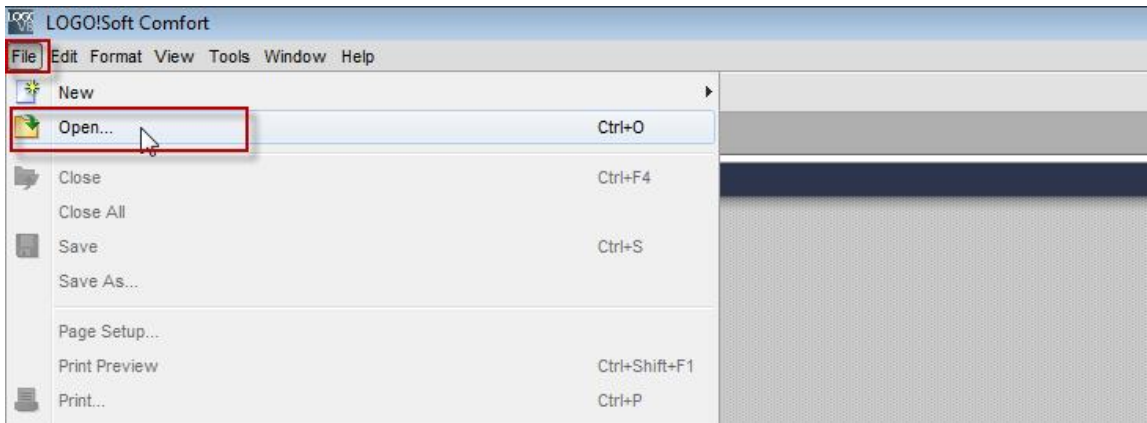


Migration of Older LOGO! Programs to LOGO! 8

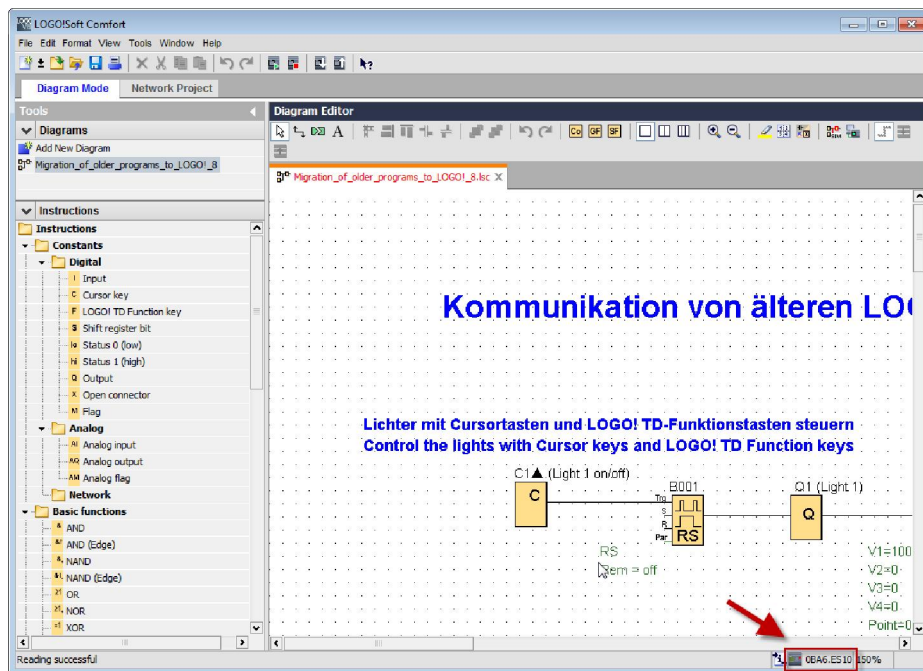
With the new LOGO! 8, programs from previous LOGO! versions can be applied without any problems. Below, you will find an explanation for the migration of older LOGO! programs based on an example.

Opening existing program and changing hardware type

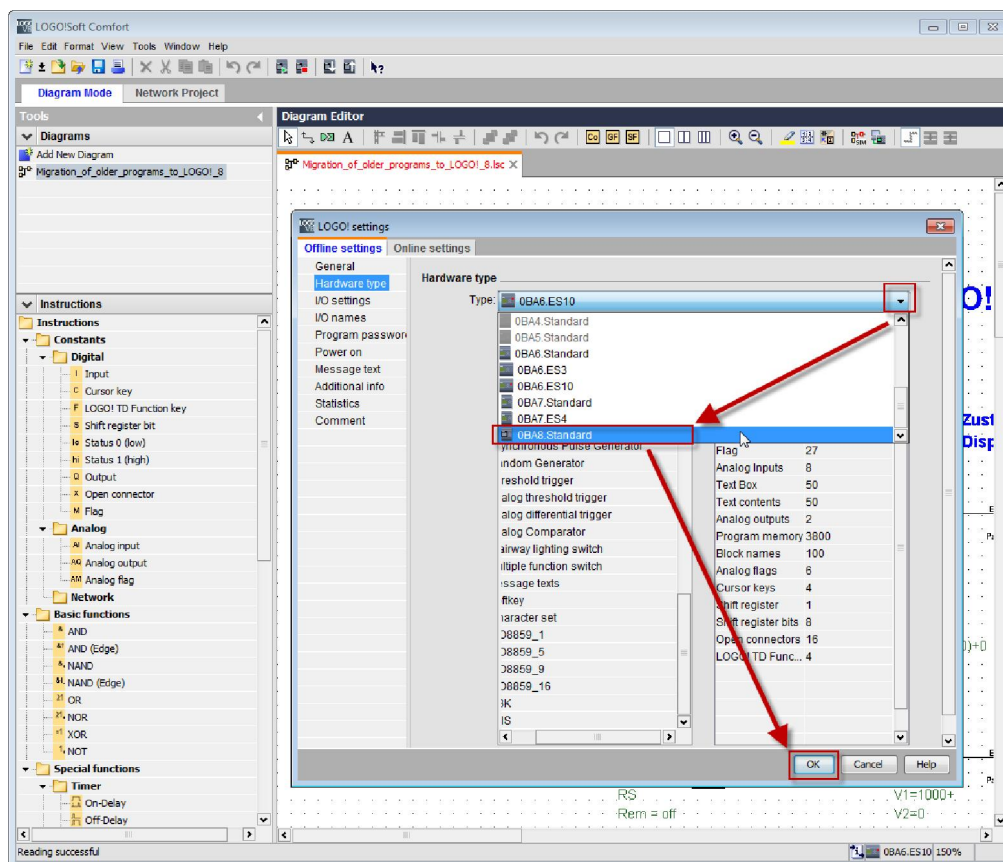
Open the program from the previous LOGO! version, here "Migration_of_older_programs_to_LOGO!_8.lsc".



Double click the hardware type on the right, on the bottom of the diagram.



Click the drop-down arrow and select "0BA8.Standard". Click "OK" to confirm the selection.



Downloading existing program to LOGO! 8

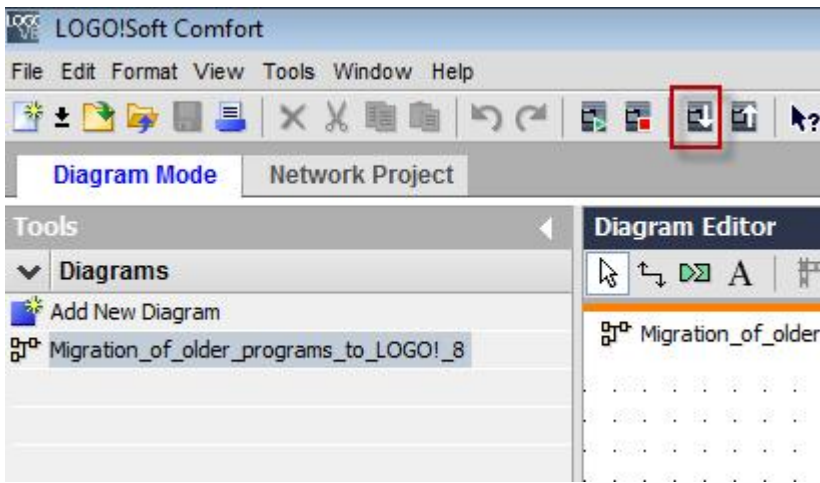
Now you can download your existing LOGO! program to LOGO! 8.



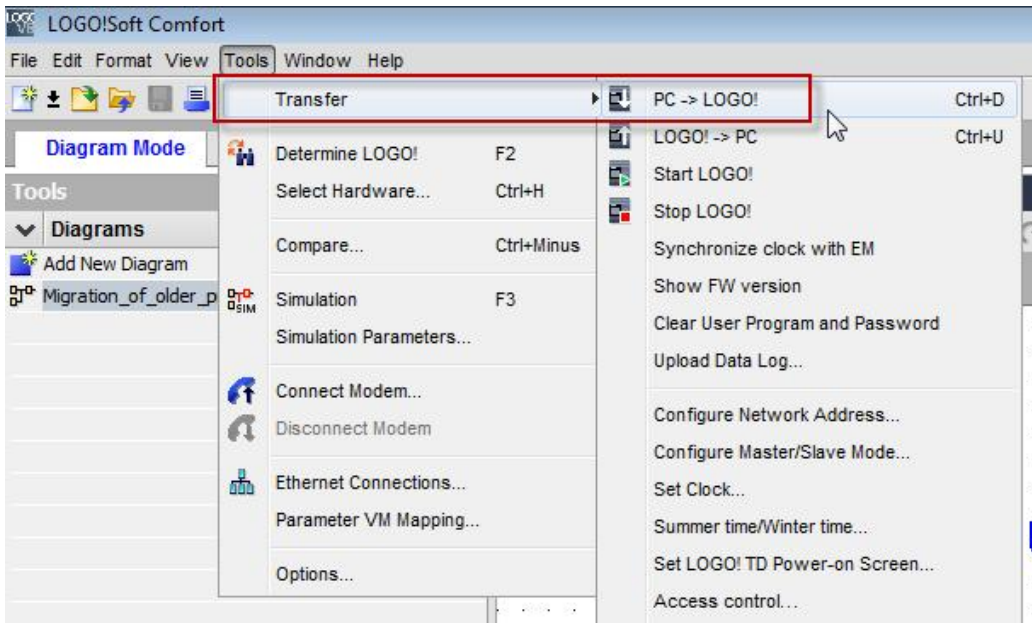
Note:

When migrating older LOGO! programs, recheck the message text properties before the download, since the newer LOGO! 8 now has a display with 6 lines with 16 characters each and the new LOGO! TDE has a display with 6 lines, with 20 characters each.

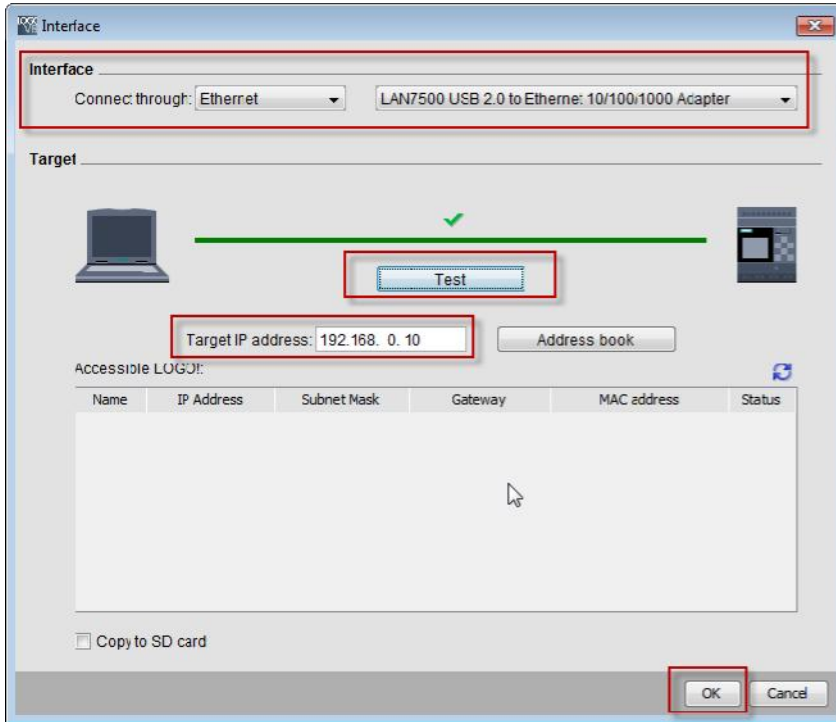
Click the “Download” button or click Ctrl+D.



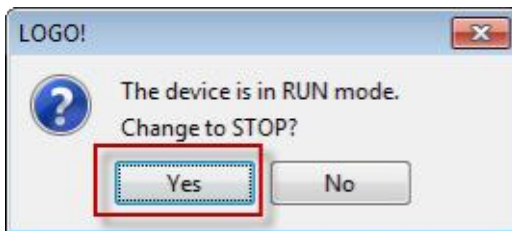
Alternatively, you can also navigate in the menu to “Tools > Transfer > PC -> LOGO!”.



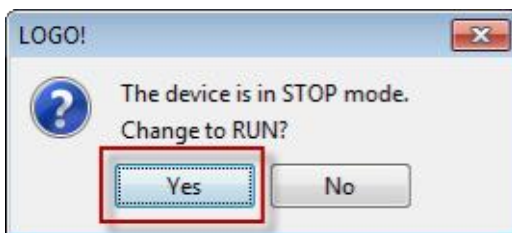
Select the interface for your connection to LOGO! and enter the IP address of your LOGO!. Click “Test” in order to check whether the connection is successful. If the connection is successful click “OK” in order to load the program into the device.



Click “Yes” to set the LOGO! to STOP before the download.



After the successful completion of the download click “Yes” in order to set the LOGO! back to RUN.



Now you can operate your existing LOGO! program with the new LOGO! 8.



Note:

More information on how you can operate your program via the integrated web server via smartphone, tablet or PC, can be found in the example “Operating web server” in “New examples for LOGO! 8” on the LOGO! homepage (www.siemens.en/logo).